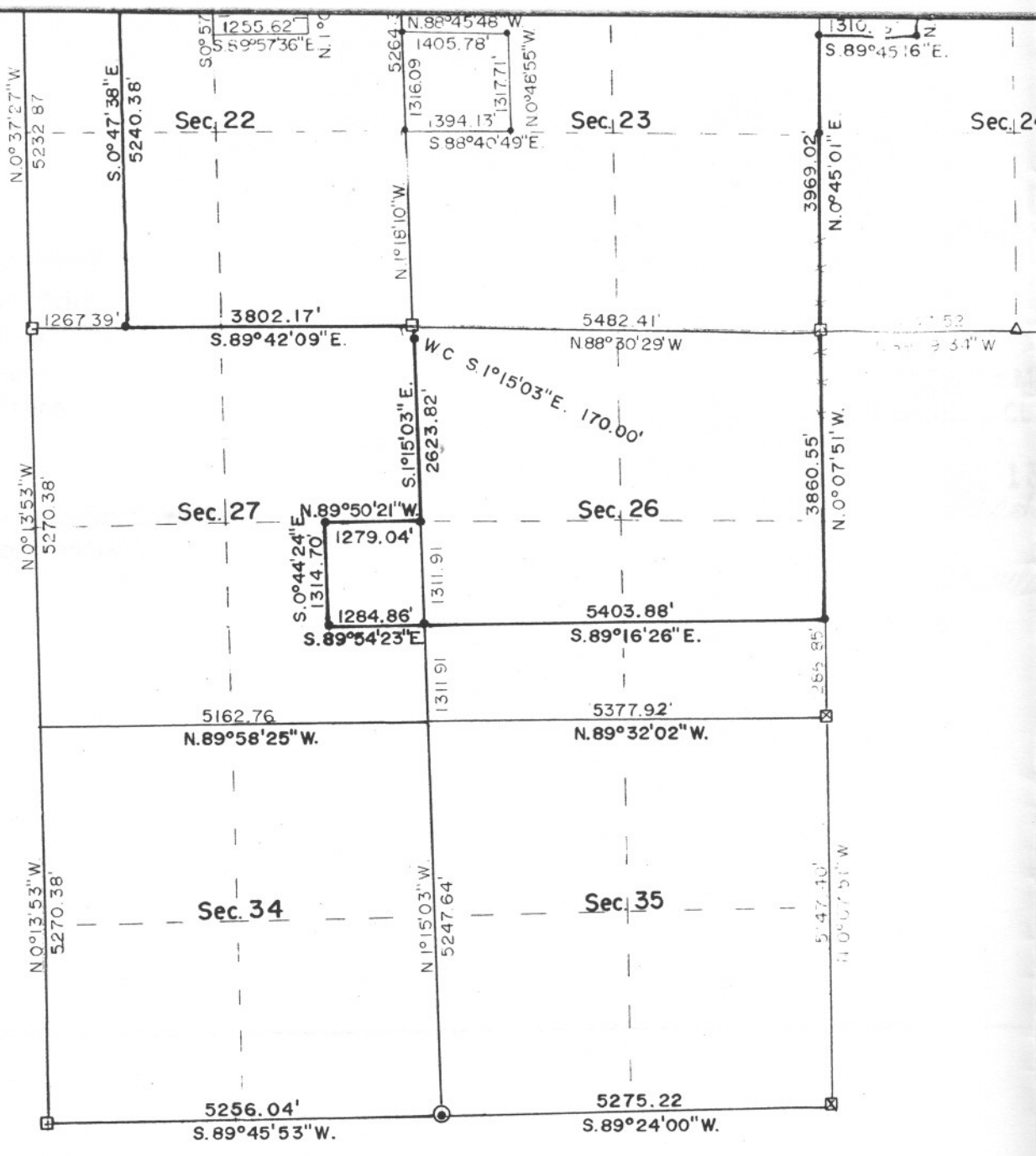




ALE 1" = 2000'



**LEGEND**

- Re-Bar Set
- Re-Bar Corner Found
- △ BLM Original Stone
- ⊙ BLM Brass Cap
- Mound of Stone

This plat represents a record of the survey and monumentation of the private land of the Church of Spiritual Technology located in portions of Sections 11, 12, 13, 14, 15, 22, 23, 24, 26 and 27 in T.15N., R.22E., and Lots 3 and 4 in Section 7, T.15N., R.23E., NMPM, San Miguel County, New Mexico.

The original stones were firmly set in the ground and well marked. Other control that was used were mounds of stones and fence line. These fence lines were used to control the section lines due to the extreme distortion in this township.

BLM and State lands are located in Sections 14, 22 and 23.

The total area contained in this private land is 5322.50 acres more or less.

I certify this survey was prepared by me and is correct to the best of my knowledge.

2624  
IN MY OFFICE

Surveyor General of New Mexico